

A

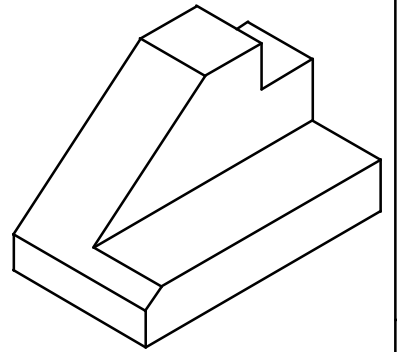
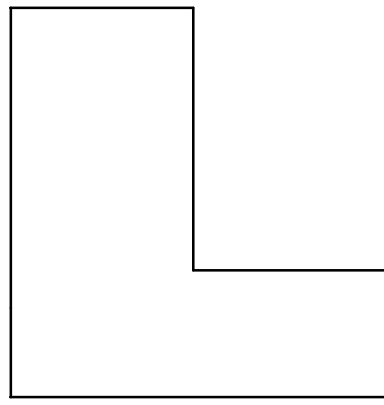
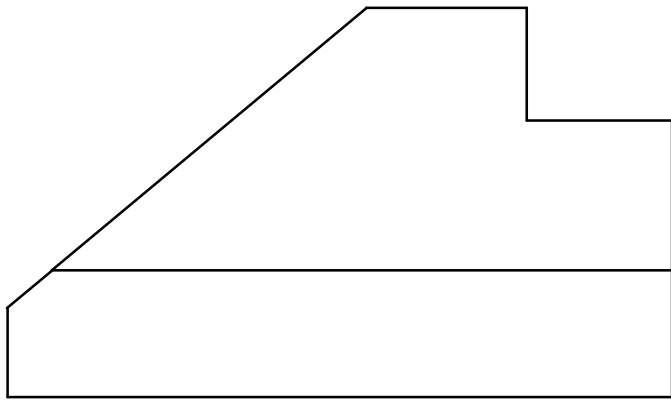
B

C

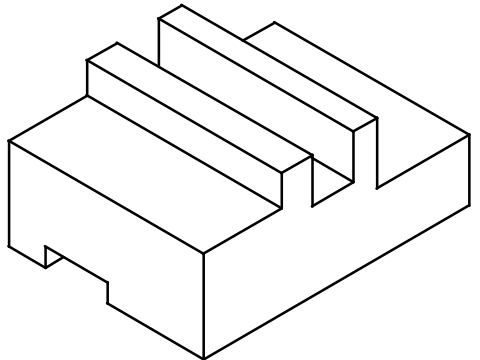
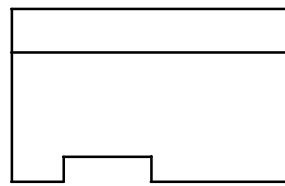
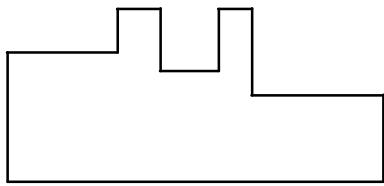
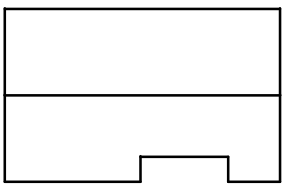
D

Mise en plan

n°1



n°2



A

B

C

D

4

4

3

3

2

2

1

1

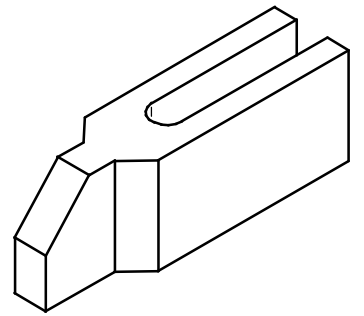
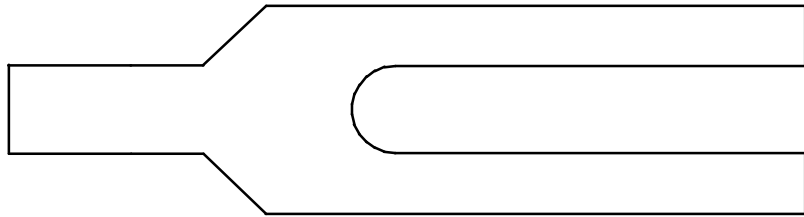
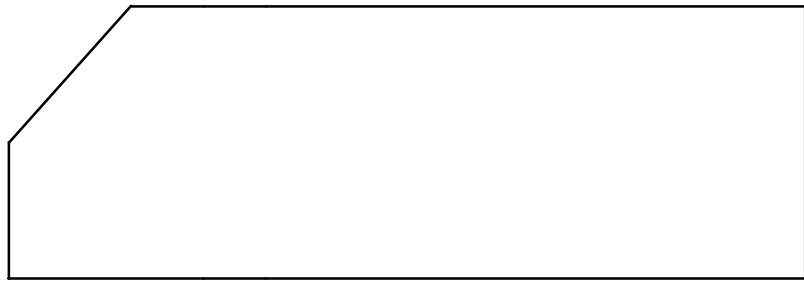
A

B

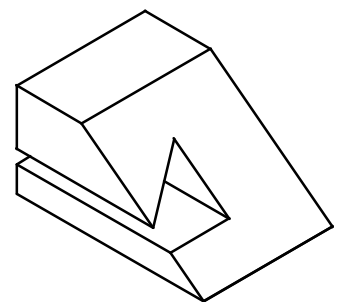
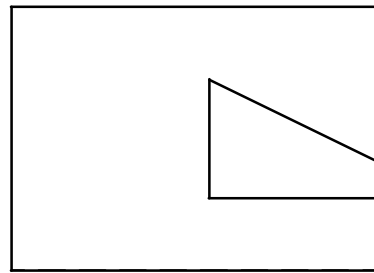
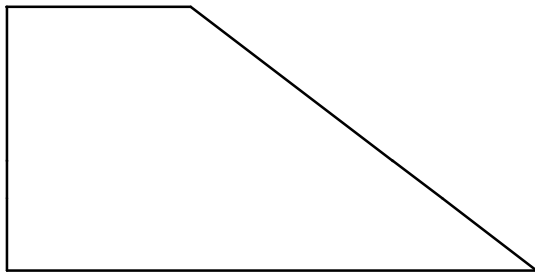
C

D

n°3



n°4



4

3

2

1

4

3

2

1

A

B

C

D

A

B

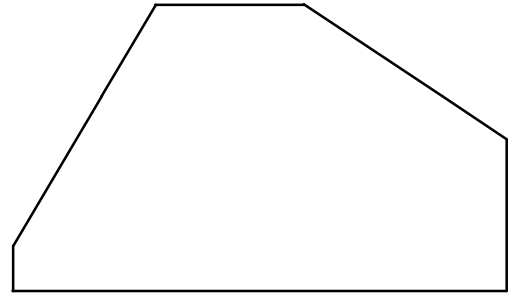
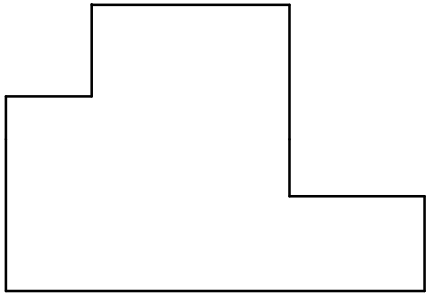
C

D

n°5

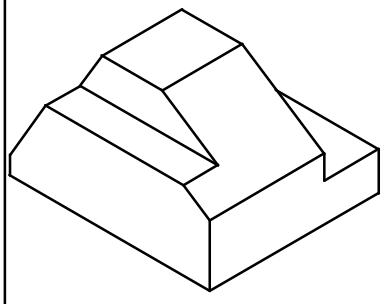
4

4



3

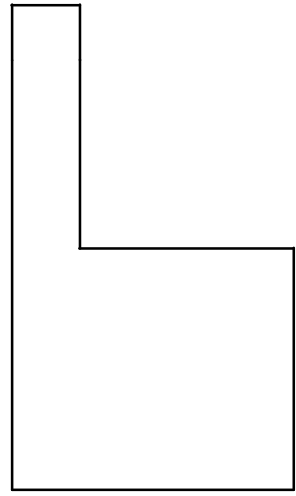
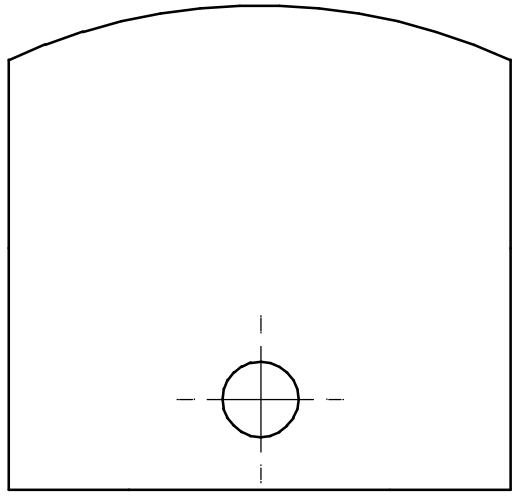
3



n°6

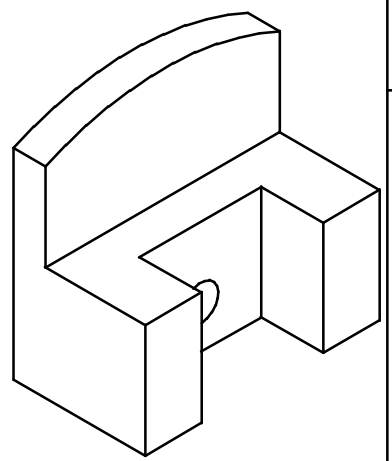
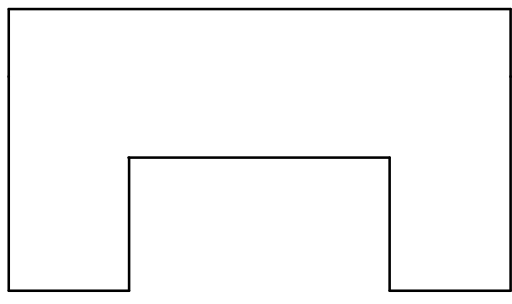
2

2



1

1



A

B

C

D

A

B

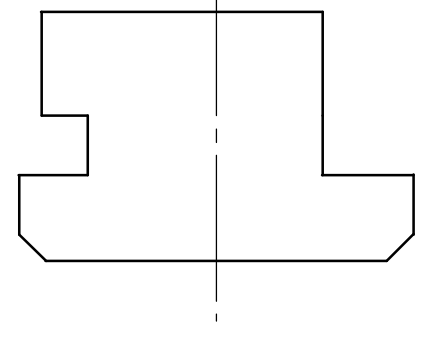
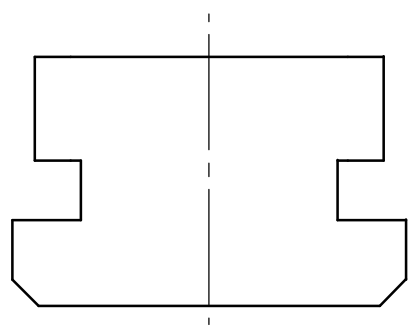
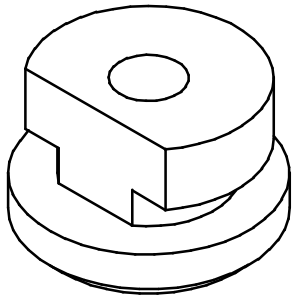
C

D

n°7

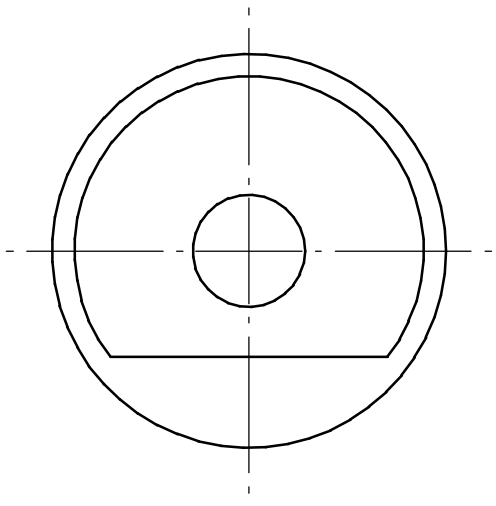
4

4



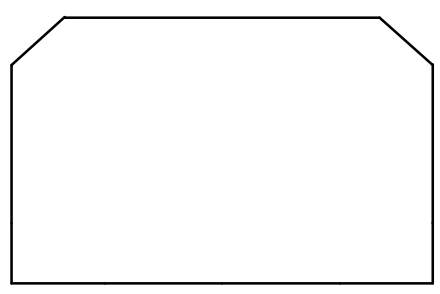
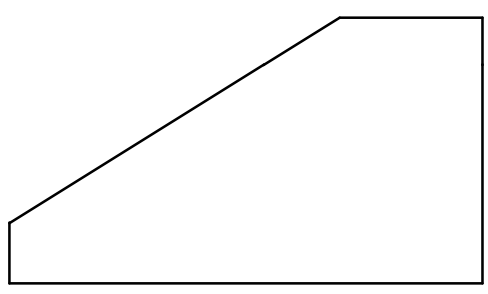
3

3



2

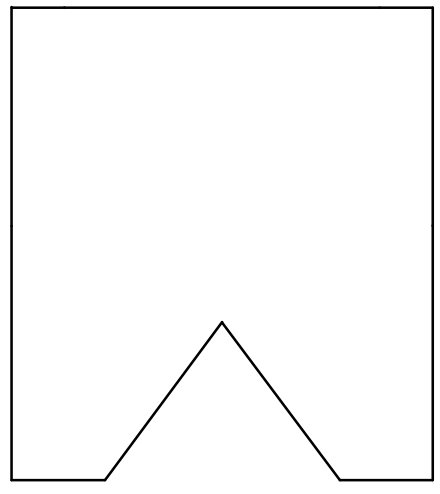
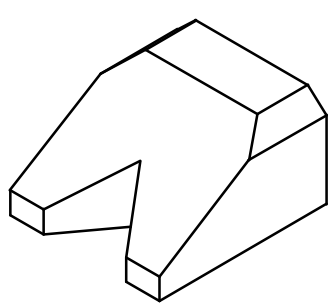
2



n°8

1

1



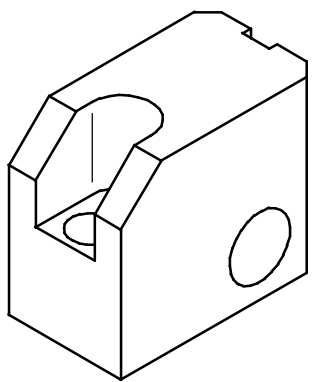
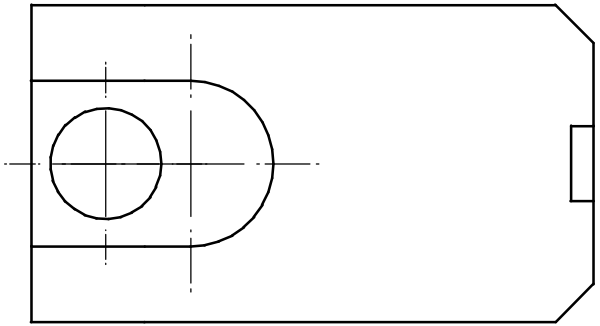
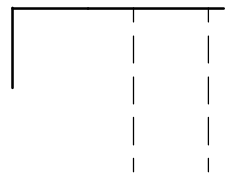
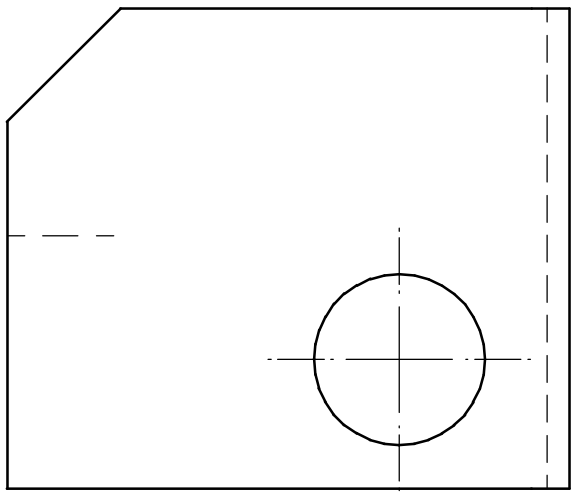
A

B

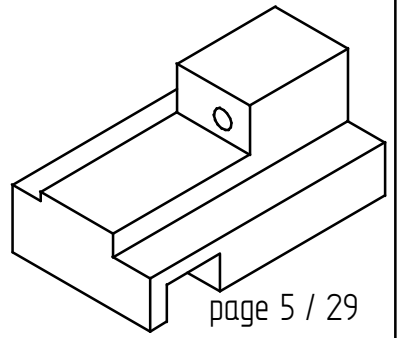
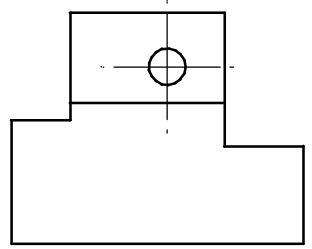
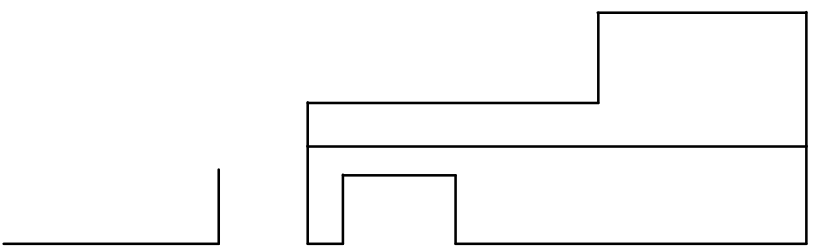
C

D

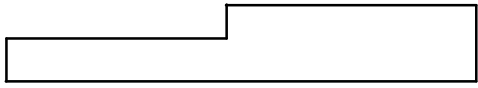
n°9



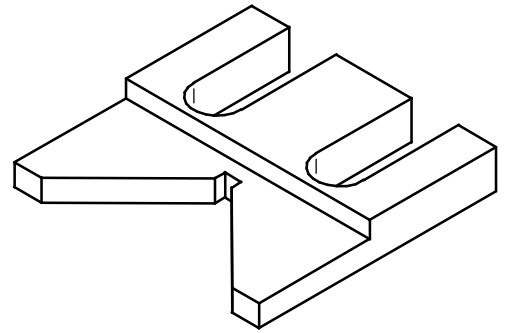
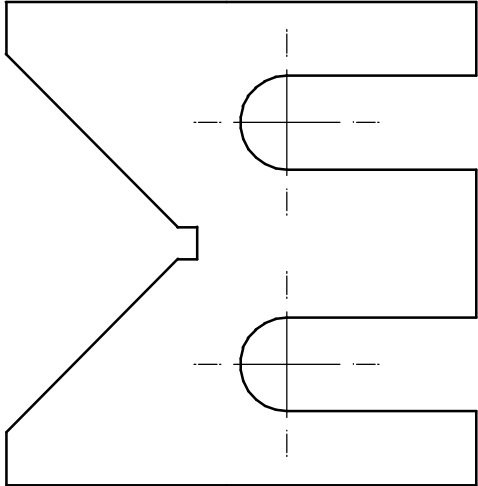
n°10



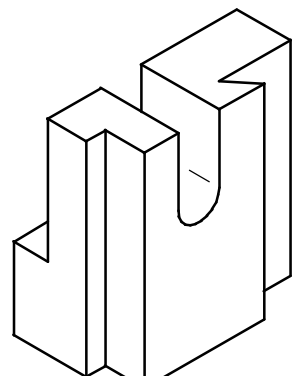
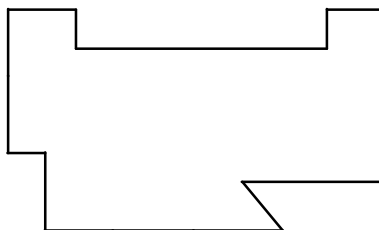
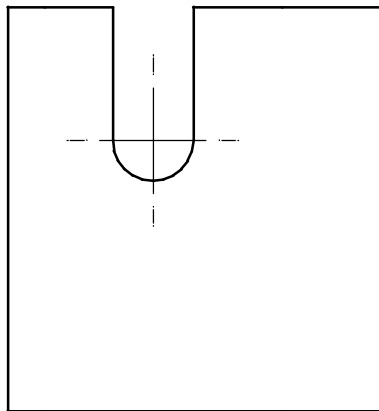
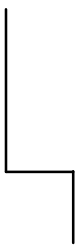
n°11



L

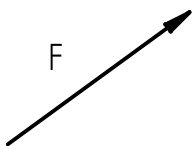
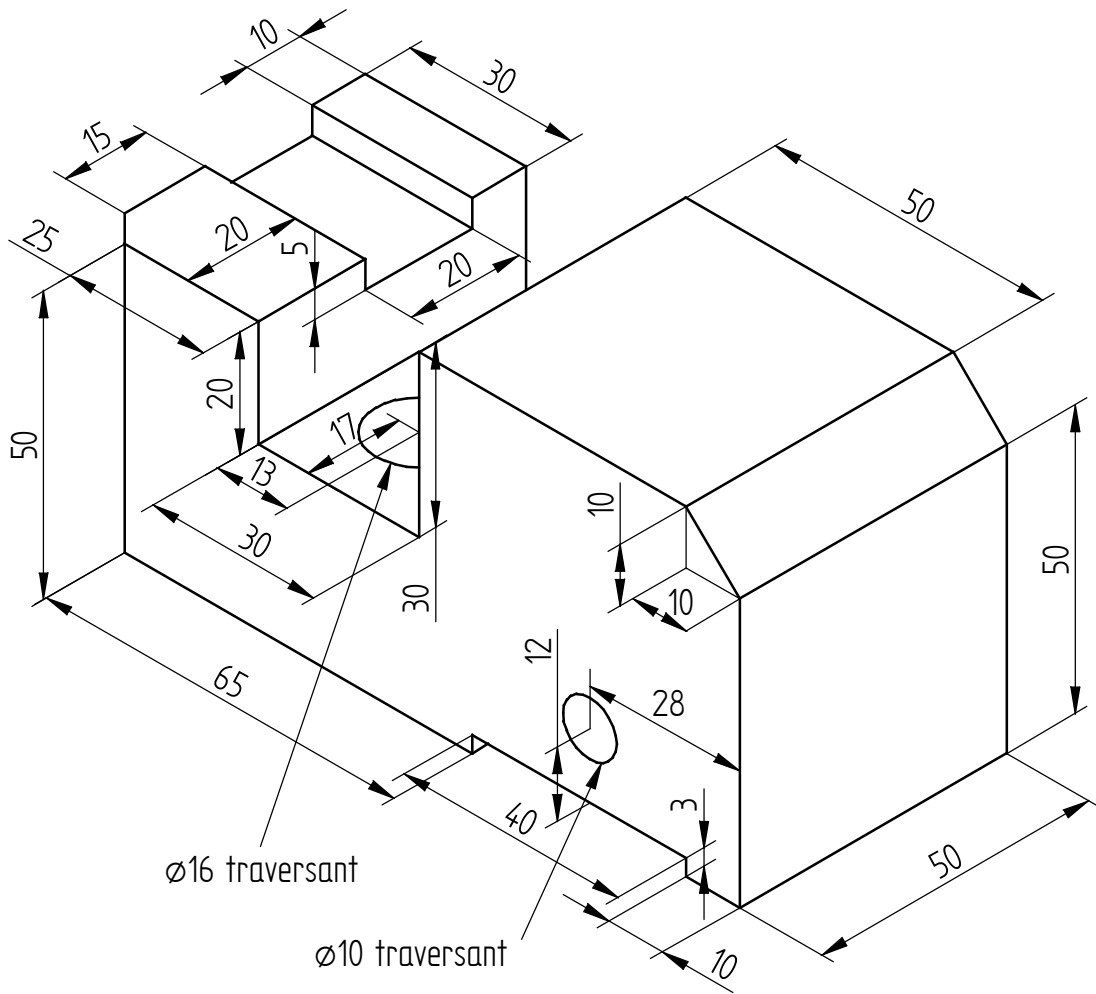


n°12



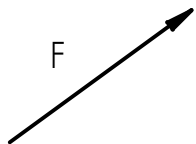
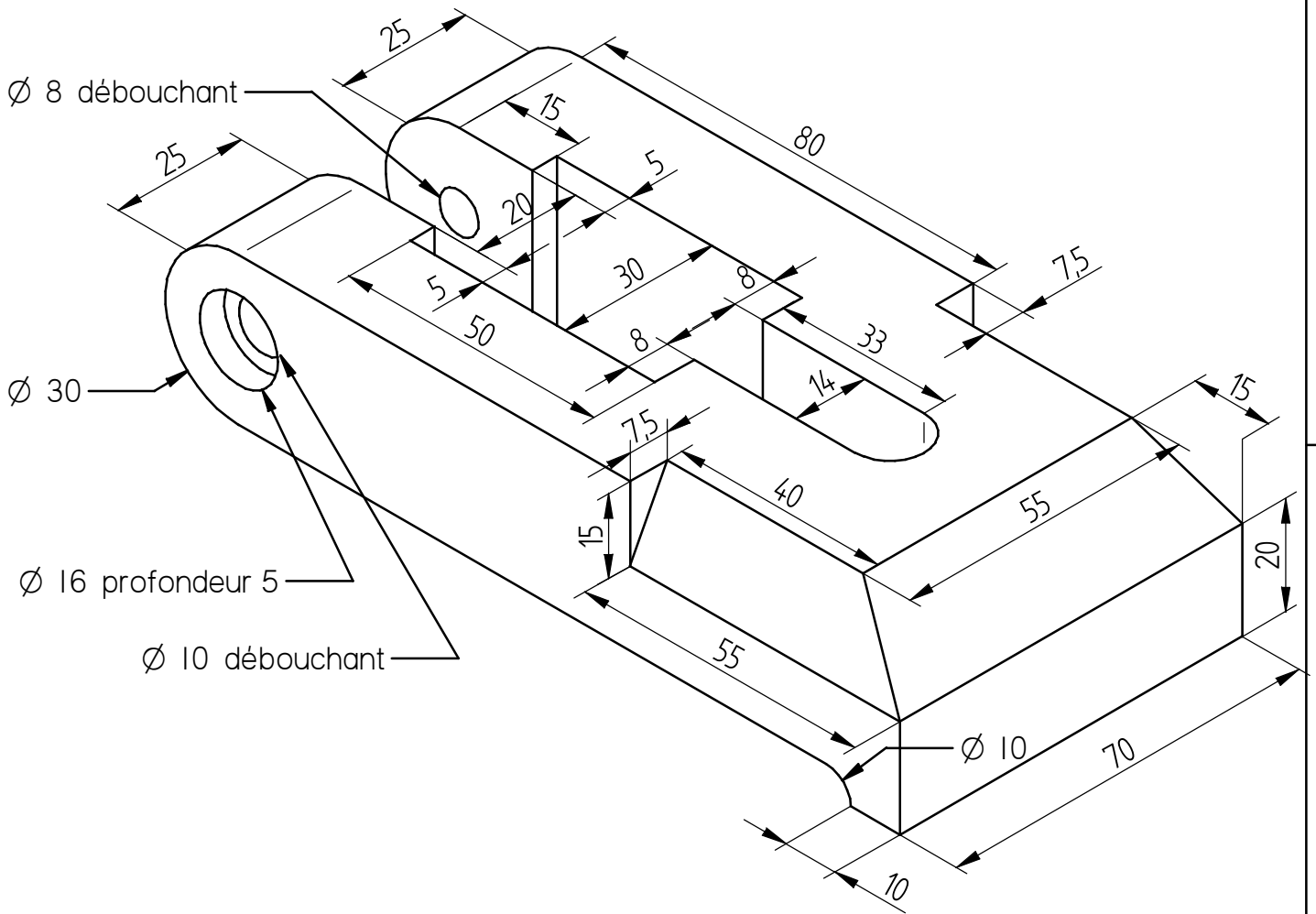
Sur A4 horizontal à l'échelle 1 :

- Vue de face complète suivant F
- Vue de gauche complète
- Vue de dessus complète



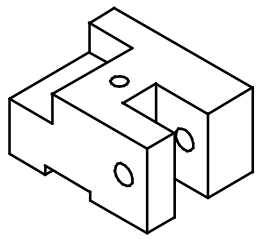
Sur A4 horizontal à l'échelle 1 :

- Vue de face complète suivant F
- Vue de gauche complète
- Vue de dessus complète





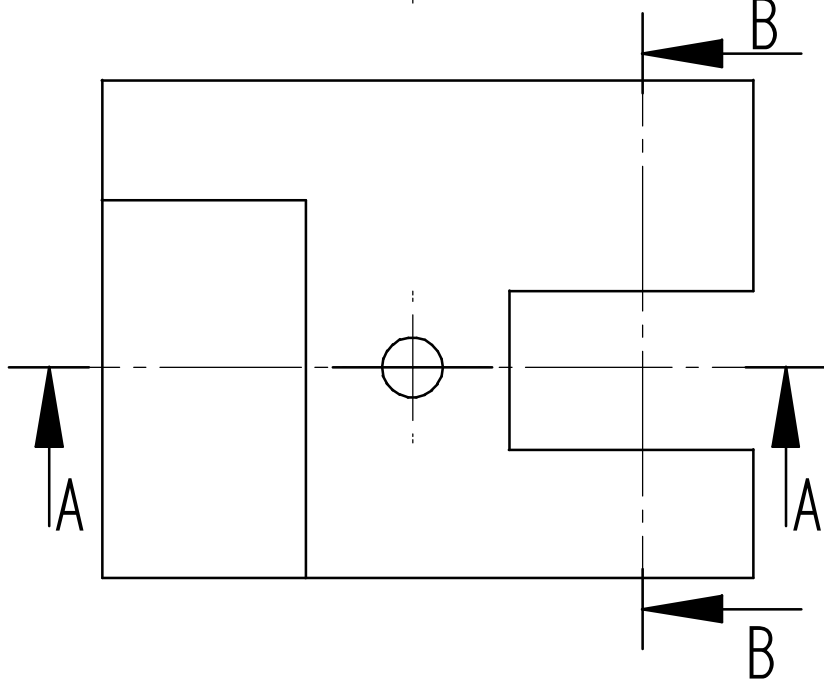
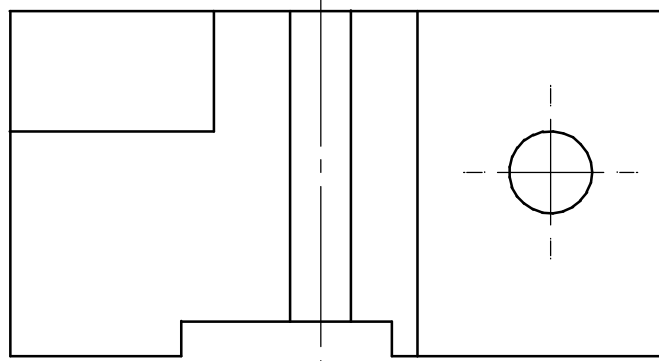
Les coupes



B-B

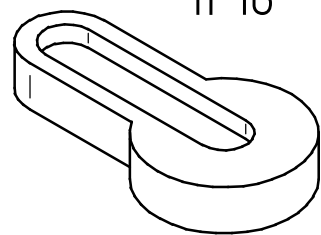
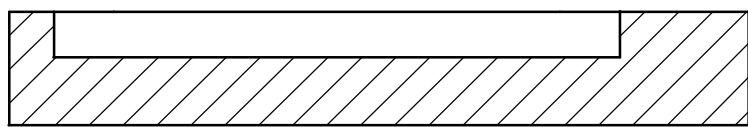
A-A

n°15

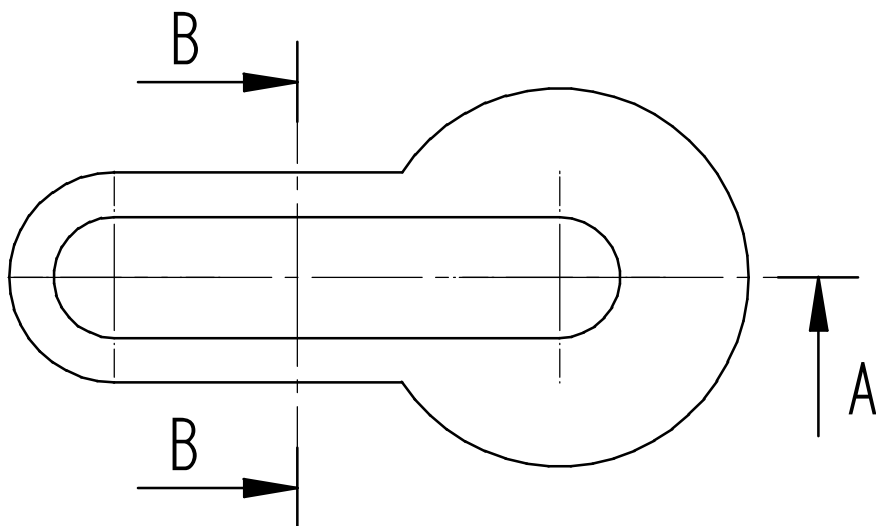


A-A

n°16



B-B



A

B

C

D

n°17  
1/2 B-B

4

4

3

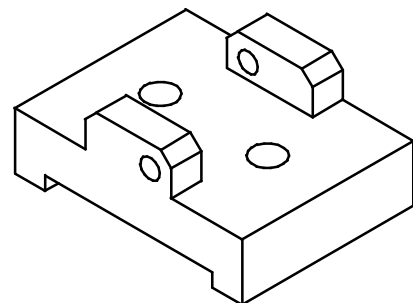
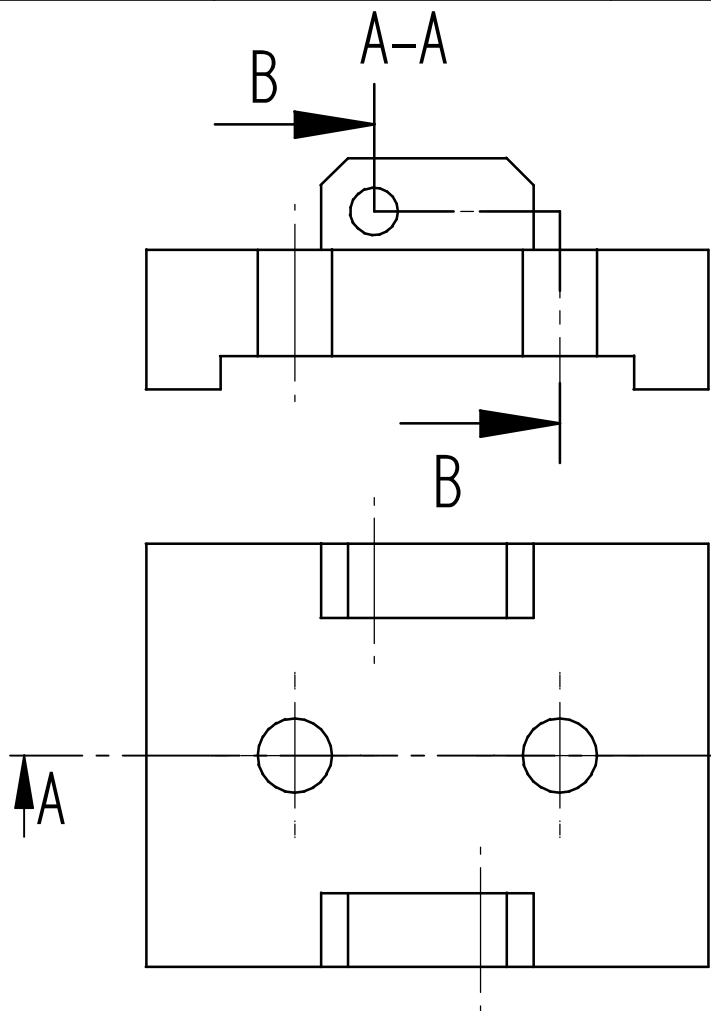
3

2

2

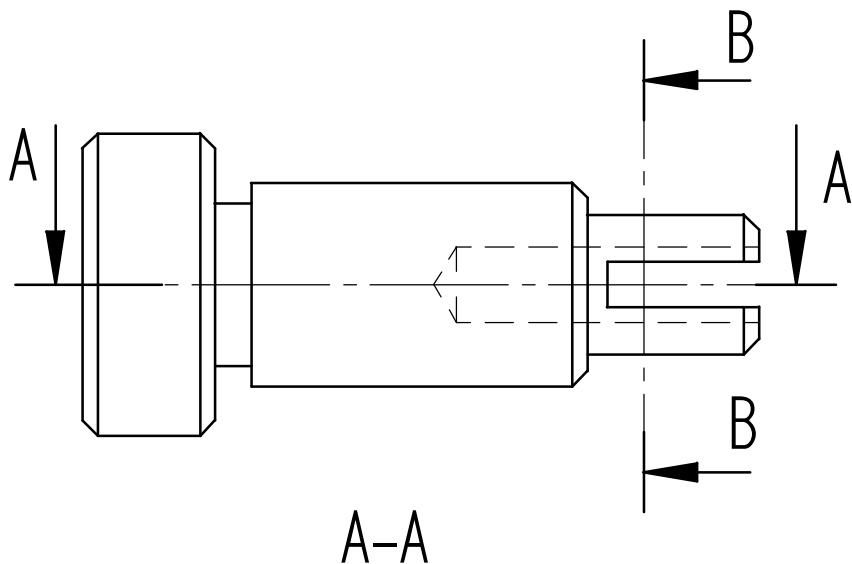
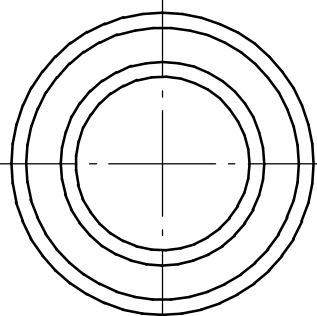
1

1



B-B

n°18



A-A

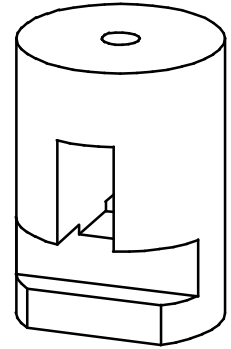
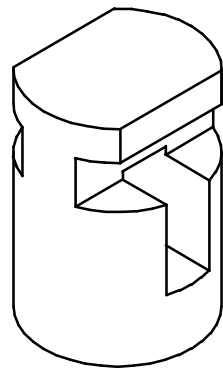
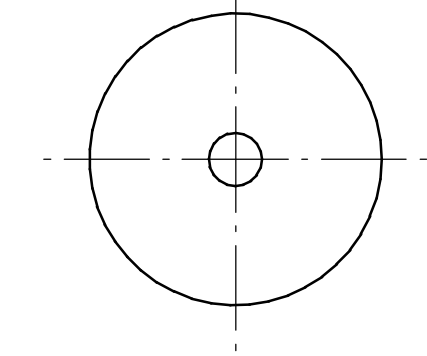
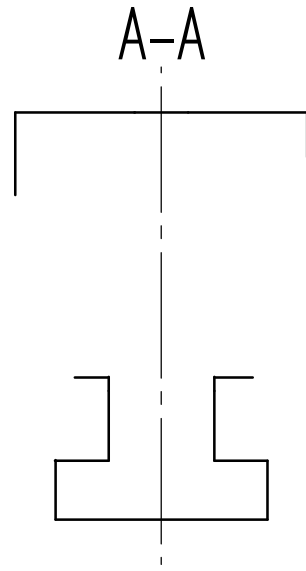
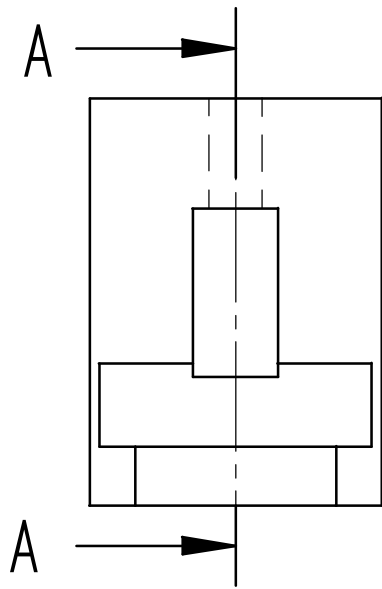
A

B

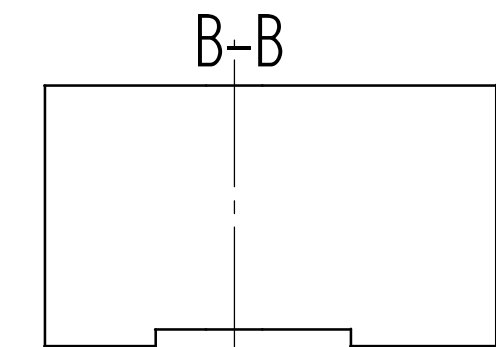
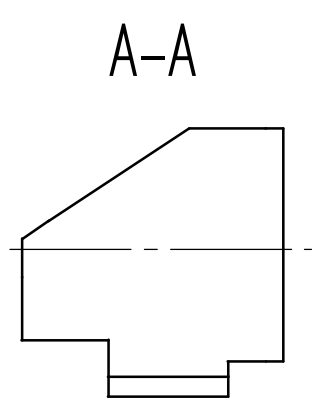
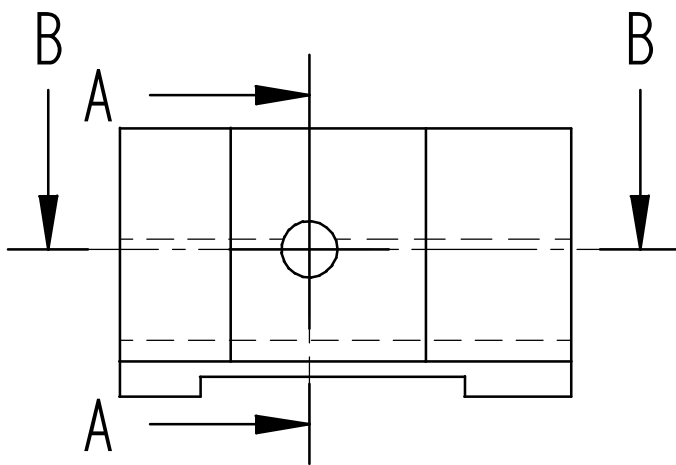
C

D

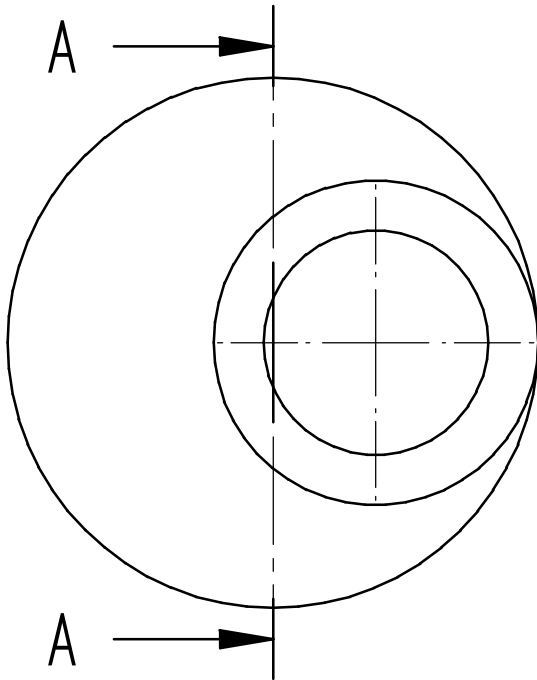
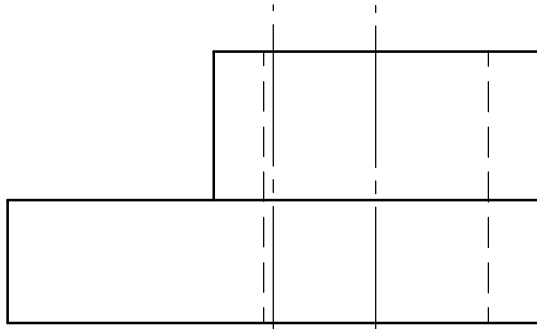
n°19



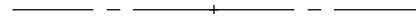
n°20



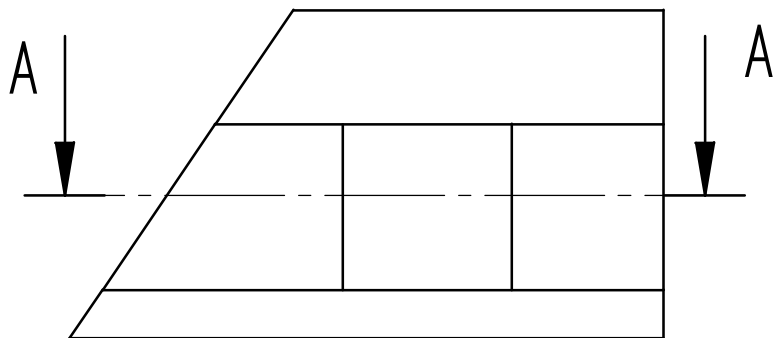
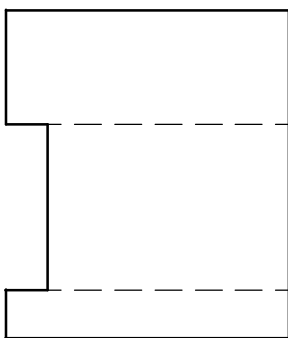
n°21



A-A



n°22



A-A



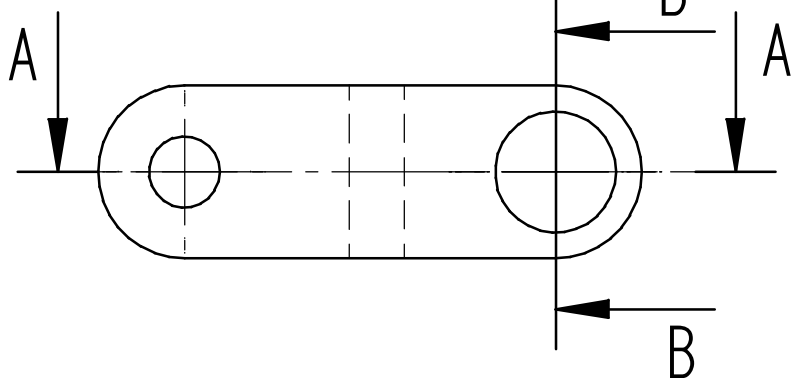
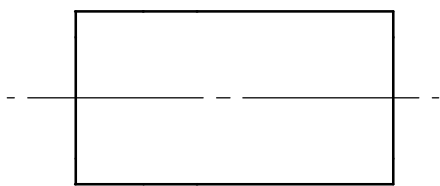
A

B

C

D

B-B



n°23

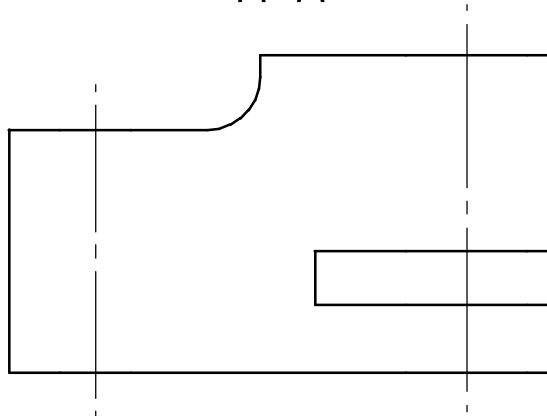
4

4

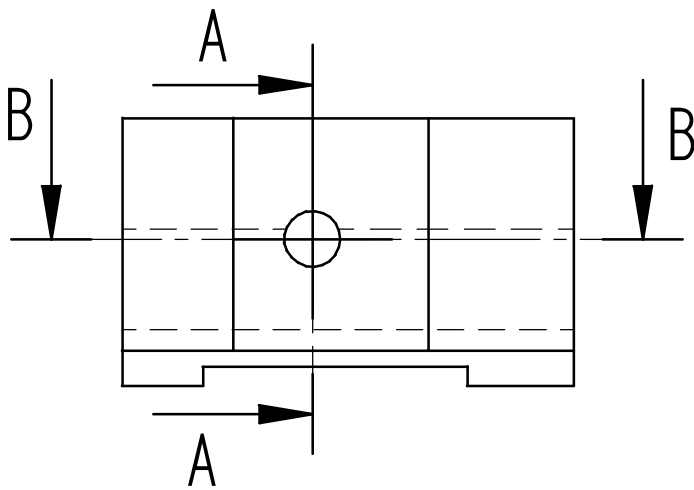
3

3

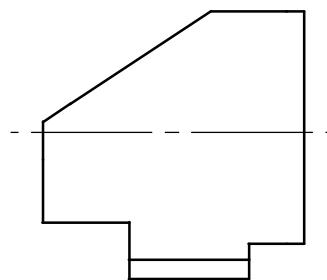
A-A



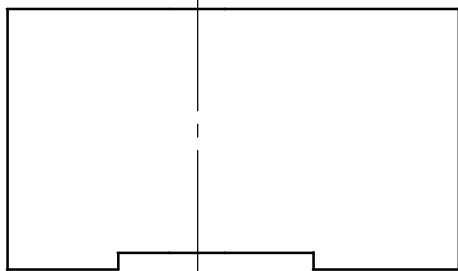
n°24



A-A



B-B



2

2

1

1

A

B

C

D

A

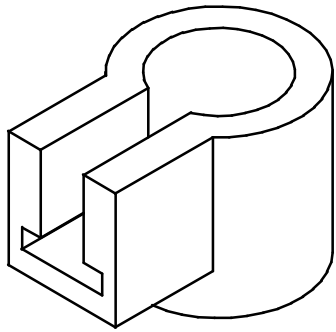
B

C

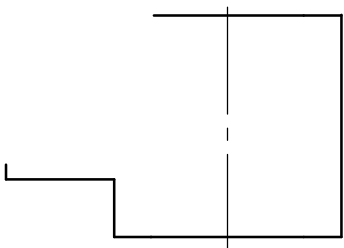
D

4

4

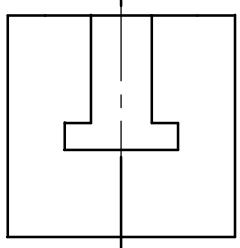


A-A



n°25

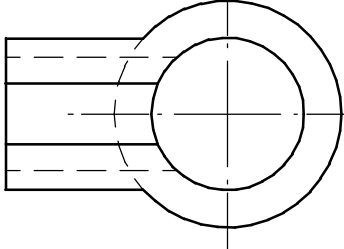
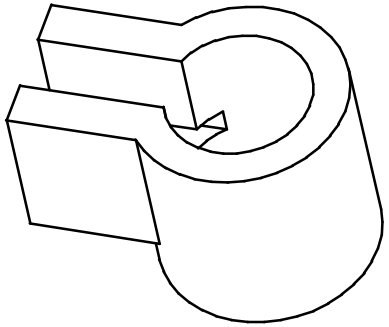
A



A

3

3

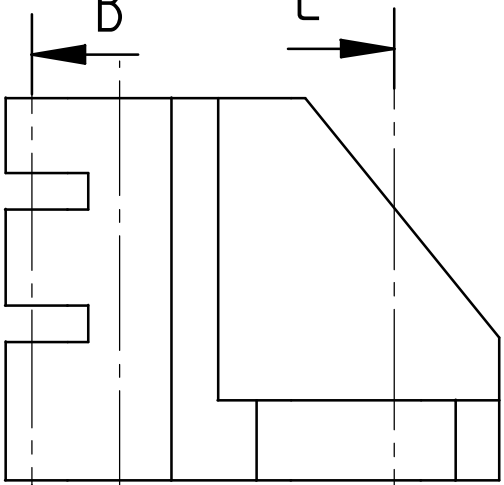


A-A

Coupe B-B

B

C



n°26

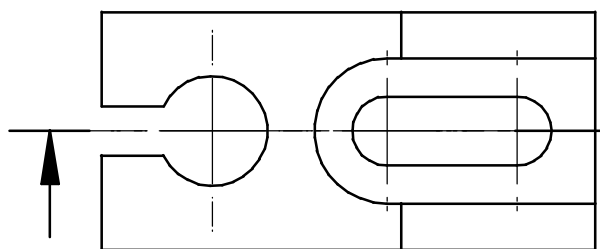
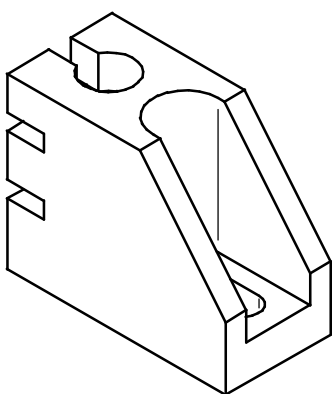
Coupe C-C

B

C

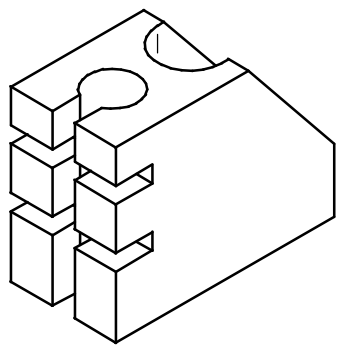
2

2



A

A



1

A

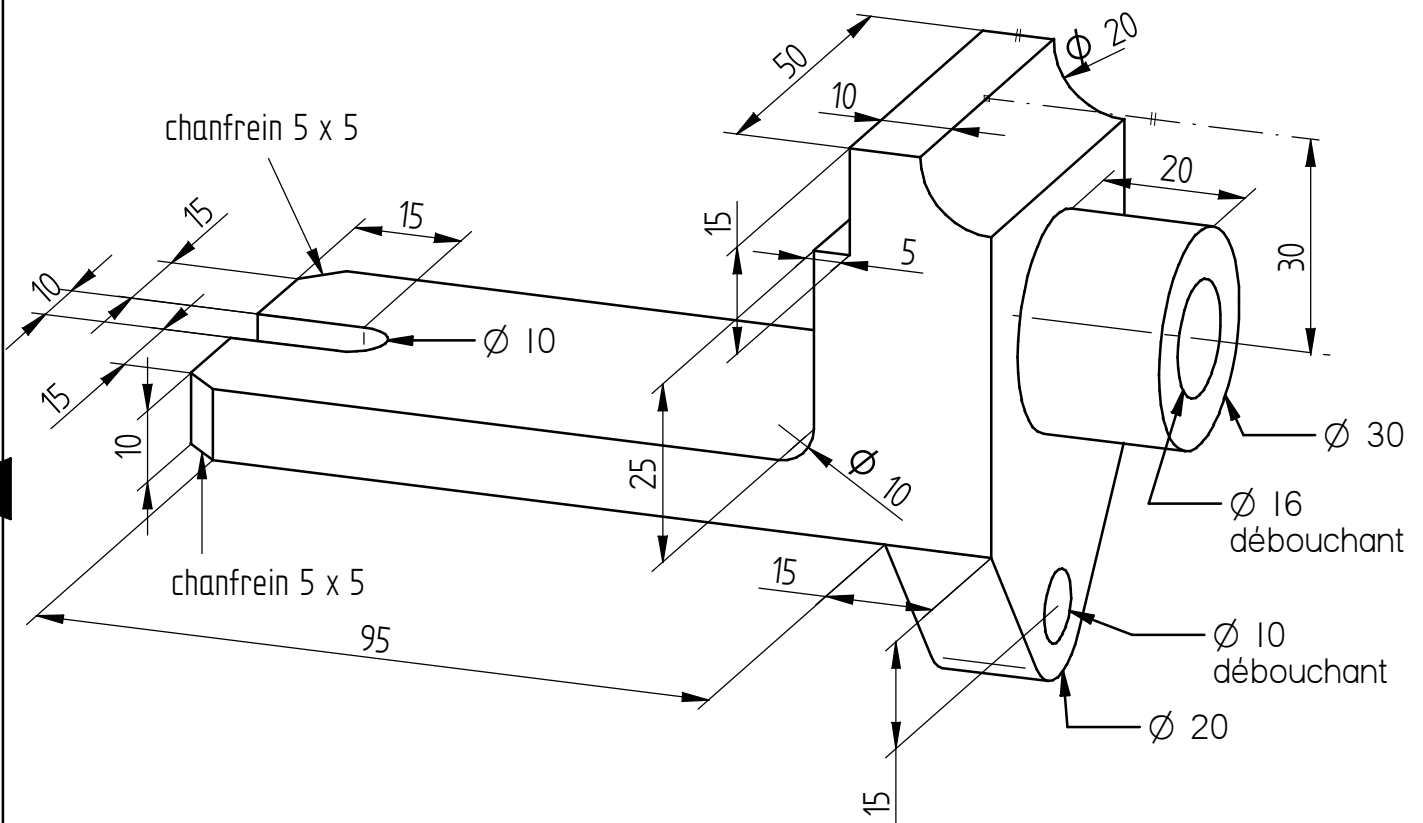
B

C

D

Sur A4 horizontal à l'échelle 1 :

- Vue de face complète suivant F, en coupe par le plan de symétrie
- Vue de gauche complète
- Vue de dessus complète



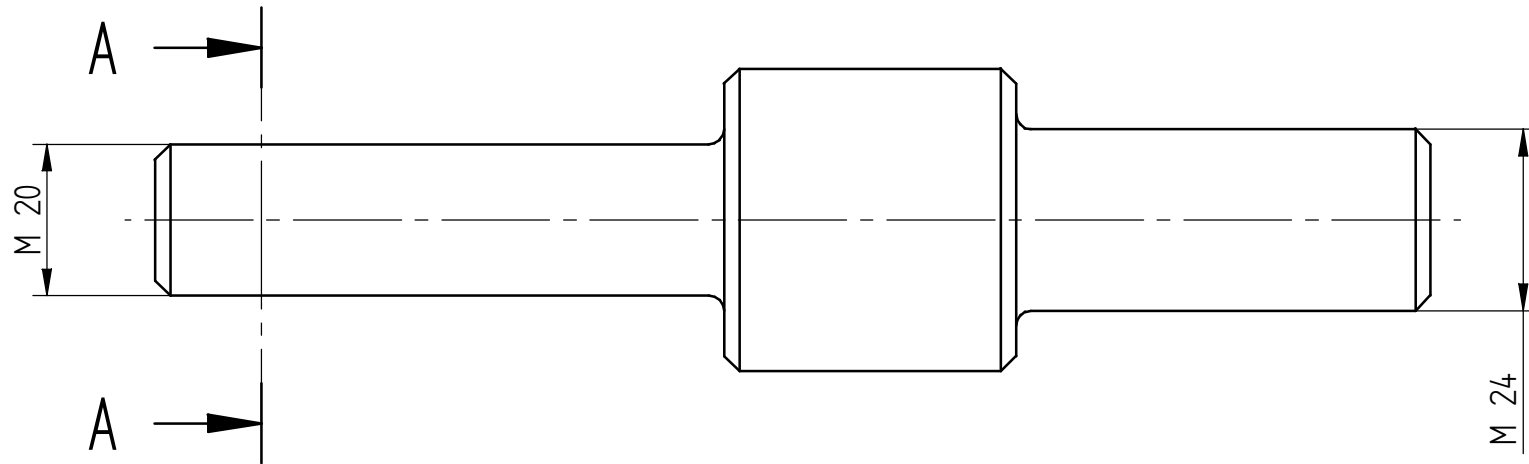
F



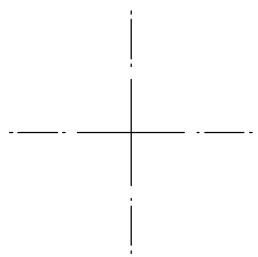


Les filetages

n°29



Section A-A



4

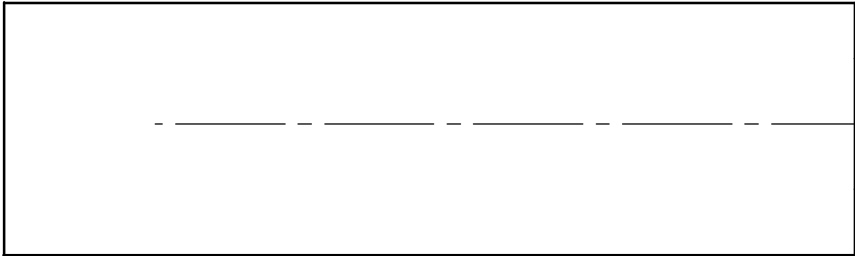
3

2

1

# COUPE A-A

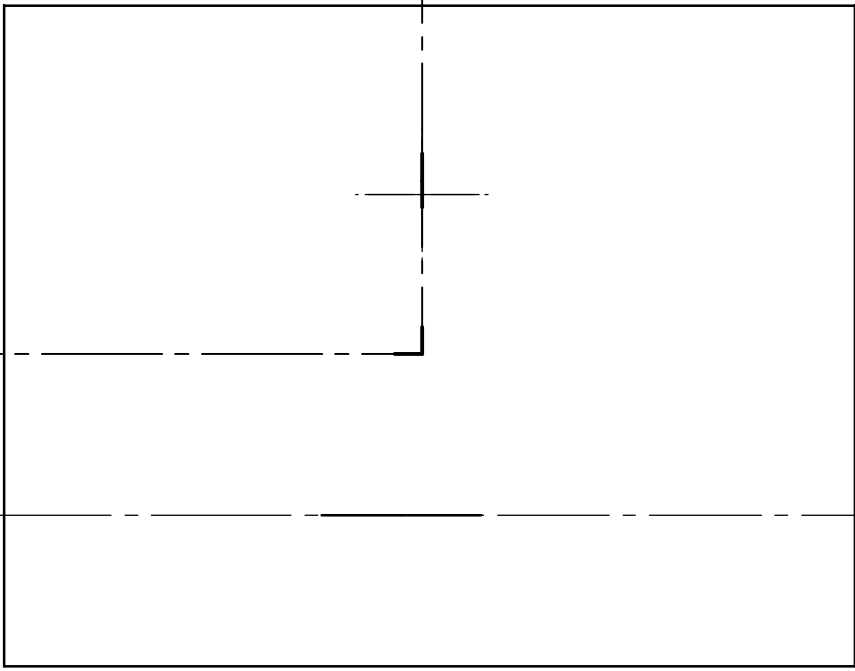
n°30



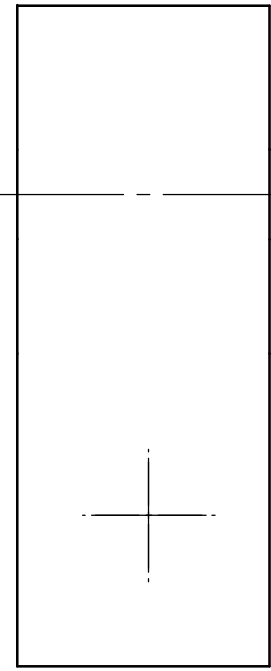
trou taraudé borgne M20  
 long perçage : 80  
 long taraudage : 60

B →

# COUPE B-B



trou taraudé débouchant M14



↑ A

↑ A

B →

4

3

2

1



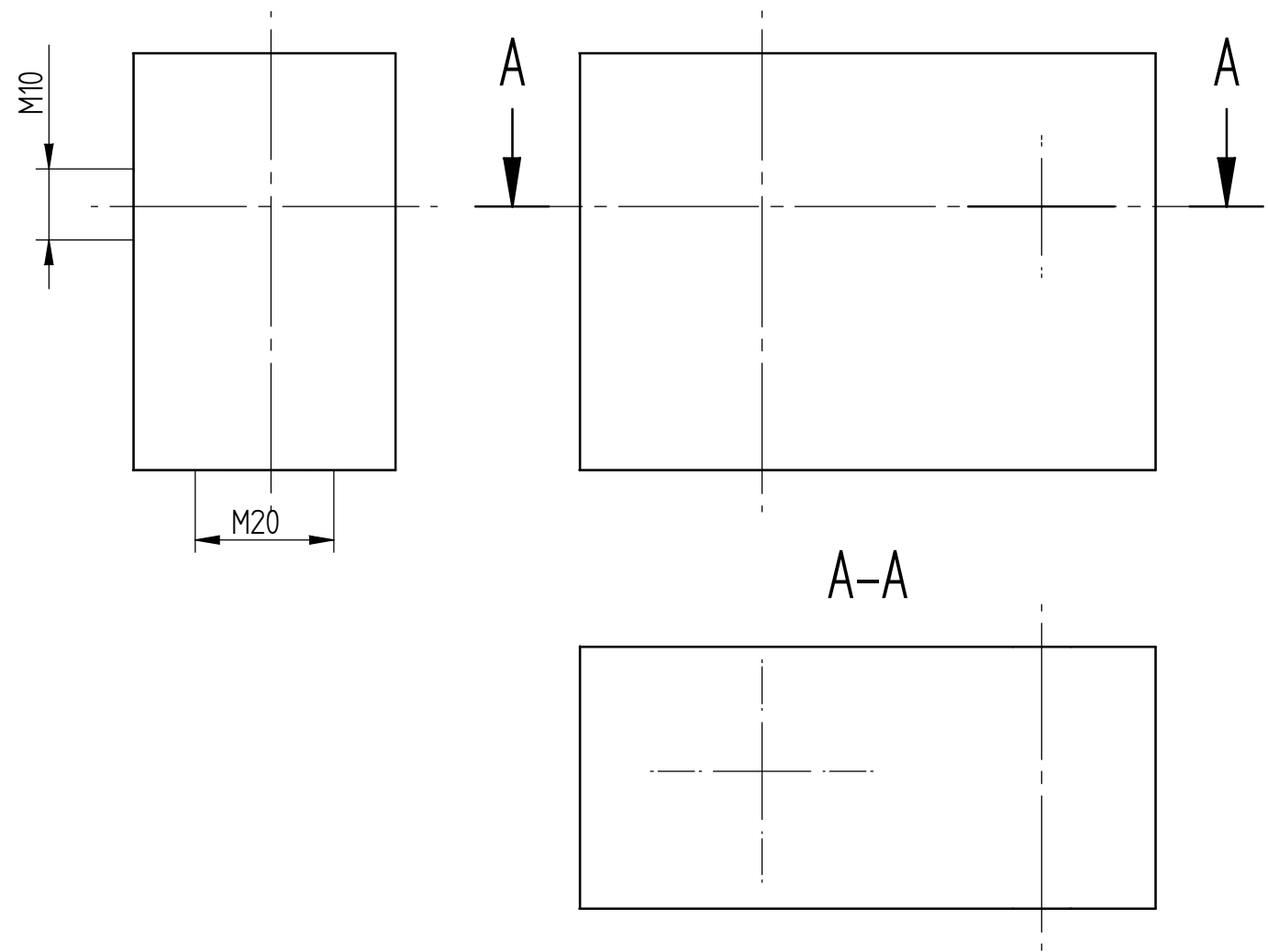
4

3

2

1

n°31



A-A

4

3



2

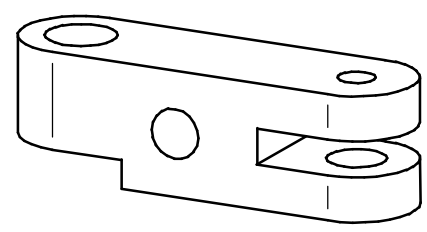
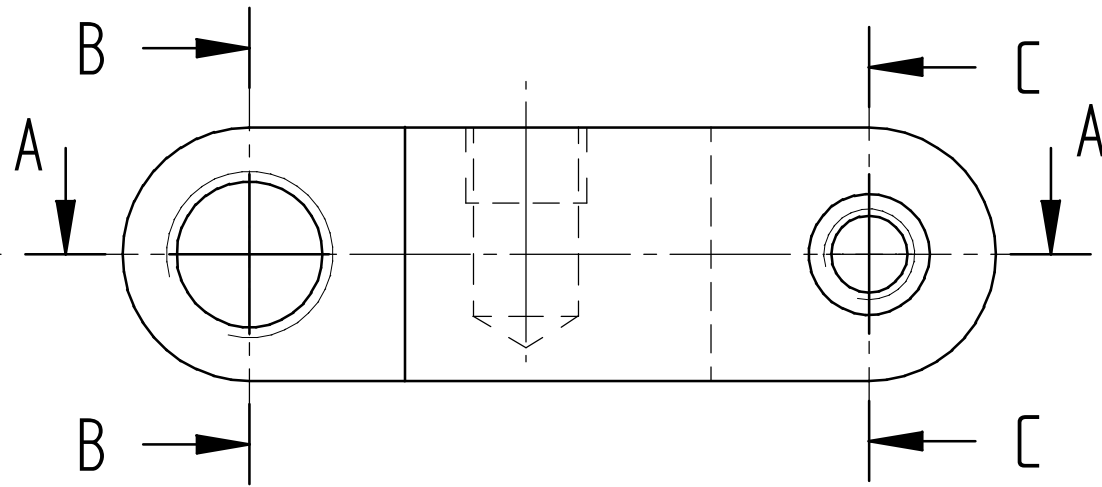
1

coupe C-C et B-B sans arêtes cachées

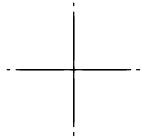
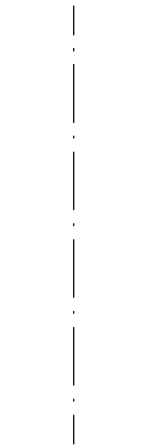
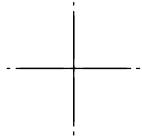
COUPE C-C

COUPE B-B

COUPE A-A

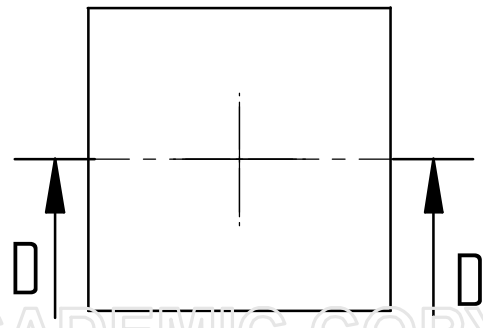
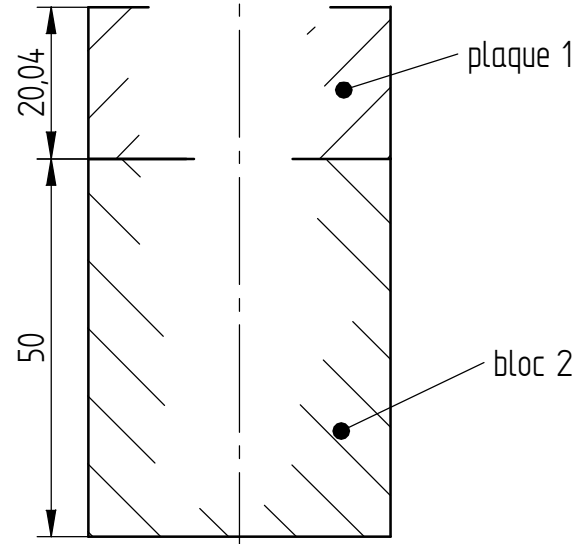


Dessin d'une vis Chc M12 35 30  
suivant 3 vues sans arêtes cachées



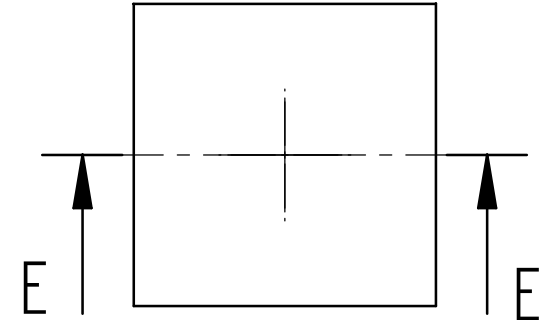
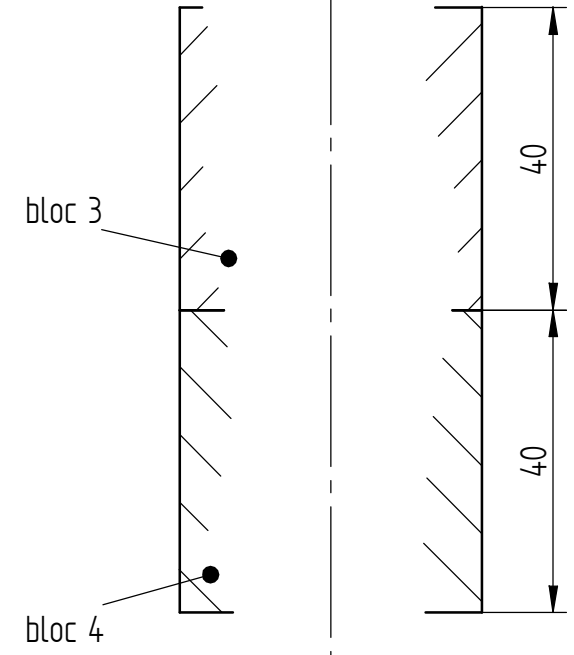
Réalisation d'un assemblage vissé entre la plaque 1 et le bloc 2 avec la vis Chc M12 35 30.  
La tête de vis est du côté de la plaque 1.  
Pas de trou débouchant dans le bloc 2.  
Compléter les 2 vues (pas d'arêtes cachées)

### Coupe D-D



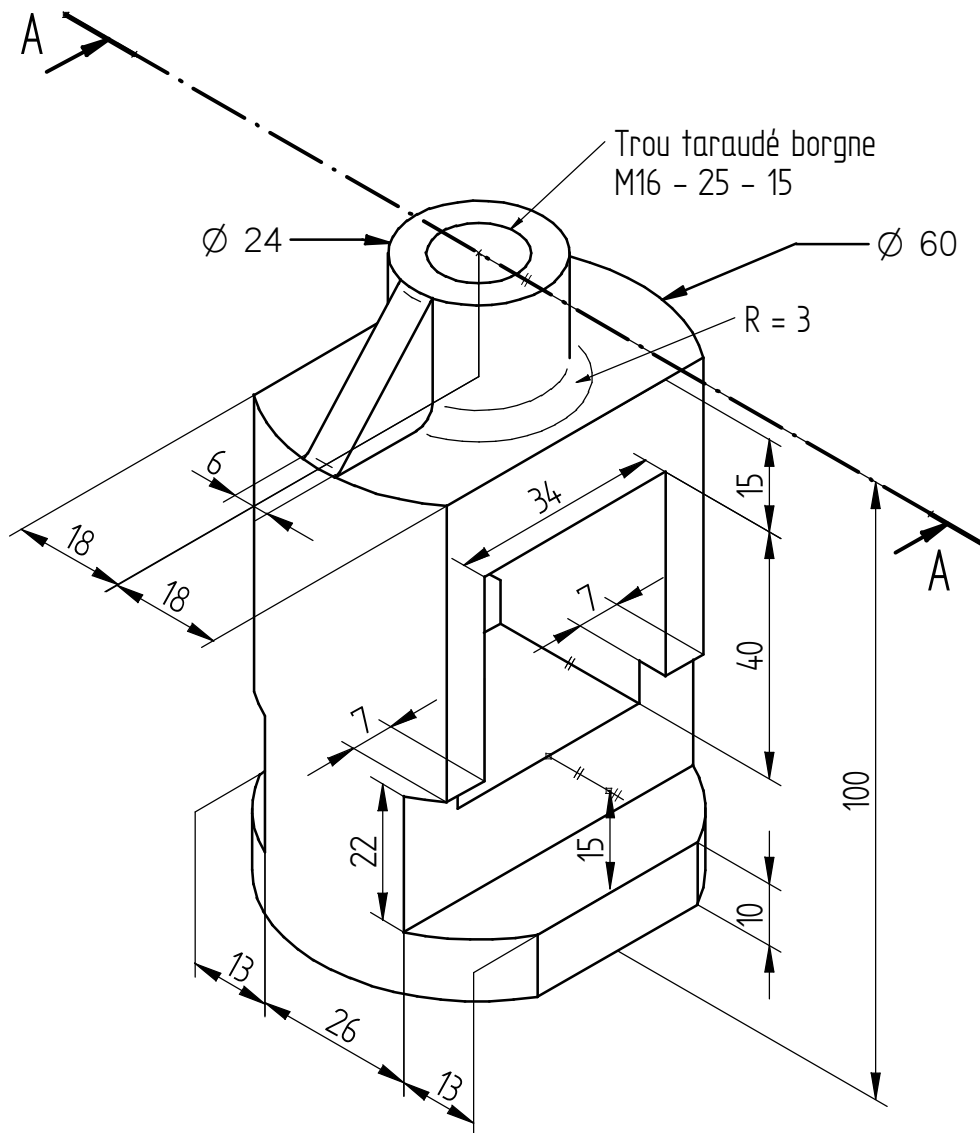
Réalisation d'un assemblage vissé entre le bloc 3 et le bloc 4 avec la vis Chc M12 35 30.  
La tête de vis est du côté du bloc 3, le bloc 4 aura un trou débouchant. Compléter les 2 vues.

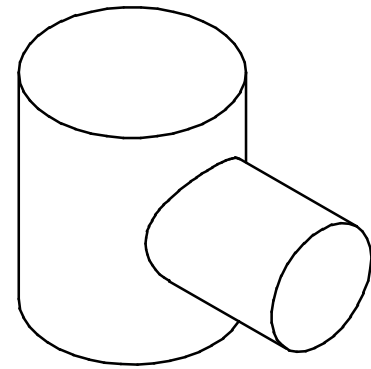
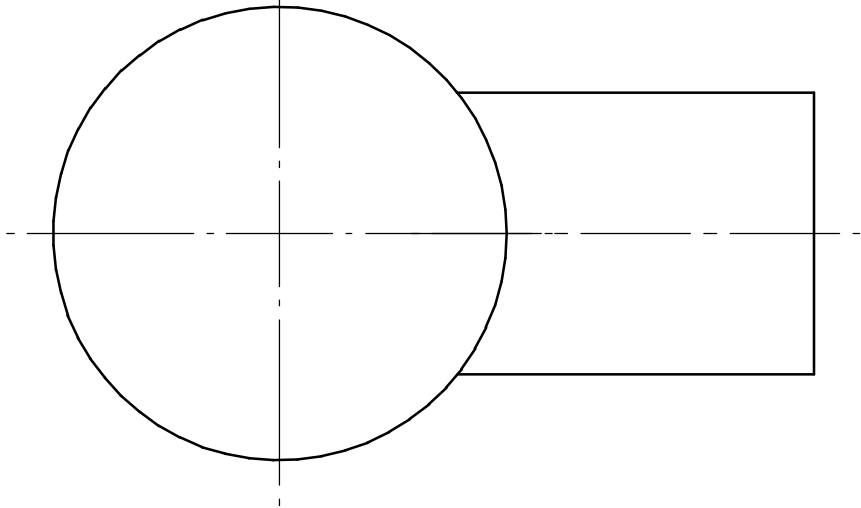
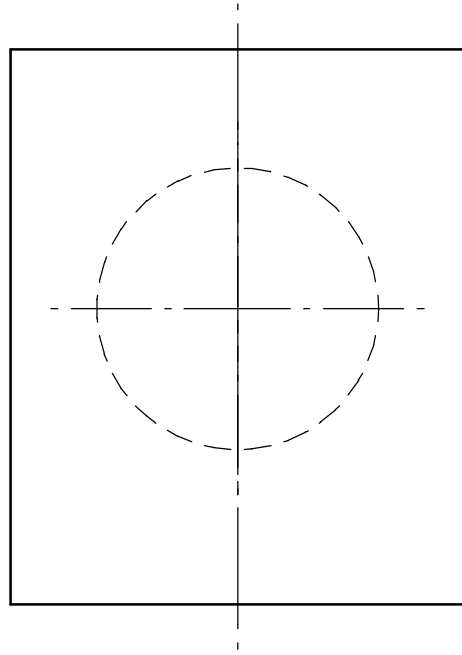
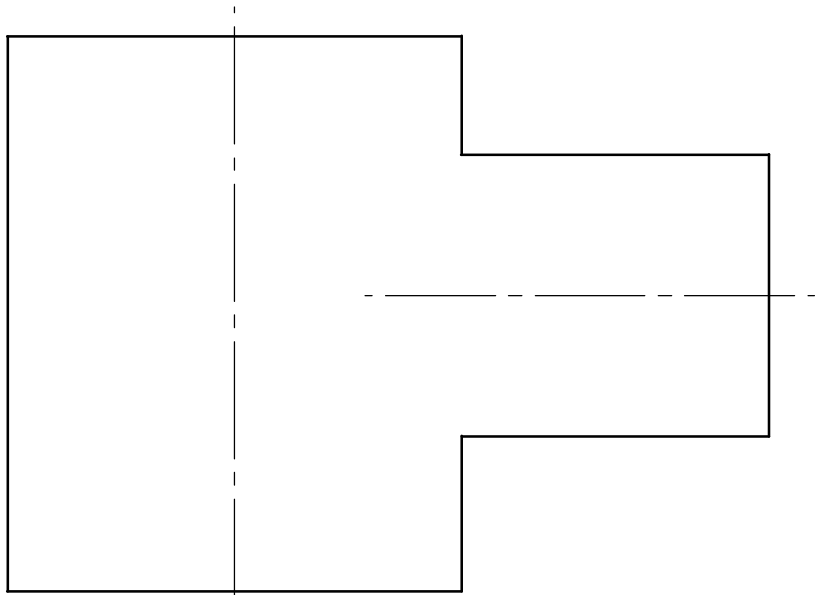
### Coupe E-E



Sur A4 vertical à l'échelle 1 :

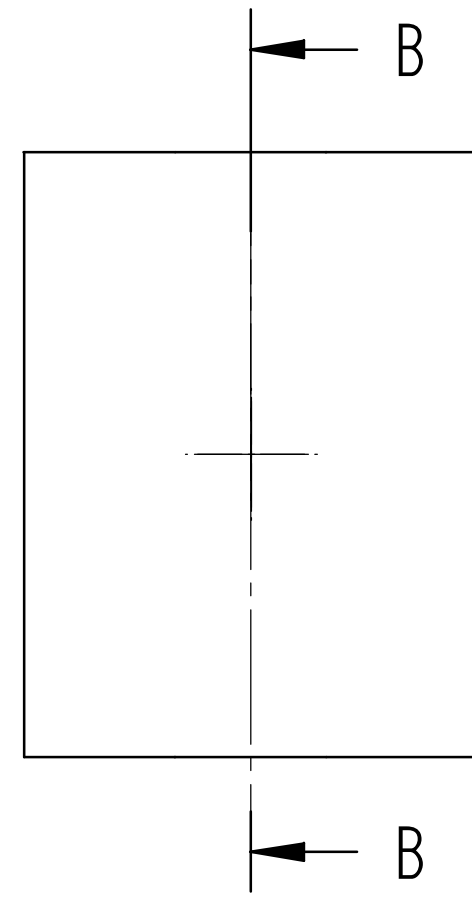
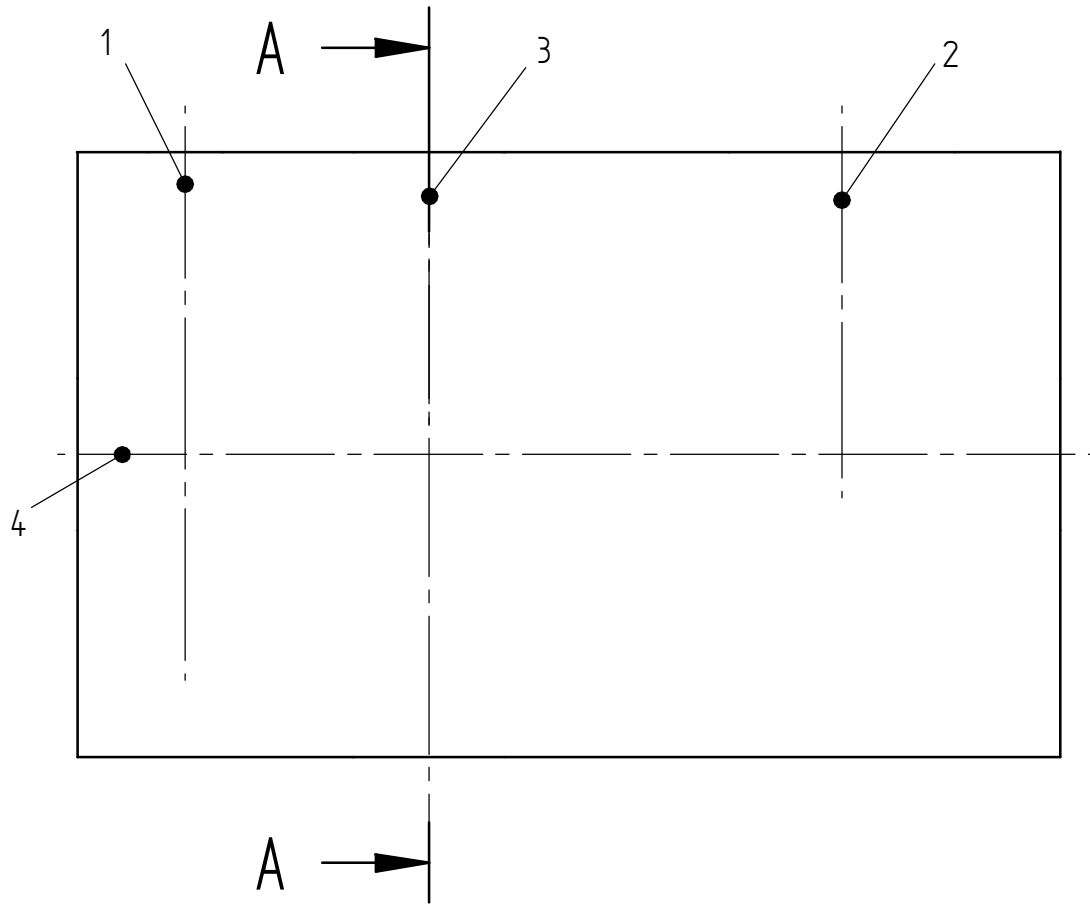
- Vue de face complète en coupe A-A
- Vue de gauche complète en coupe par le plan de symétrie
- Vue de dessus complète





B-B

A-A



1 : PERCAGE ( diam : 10 – prof : 65 )

2 : ALESAGE ( diam : 30 – prof : 45 fond plat )

3 : ALESAGE ( diam : 20 débouchant )

4 : ALESAGE ( diam : 20 débouchant )



A

B

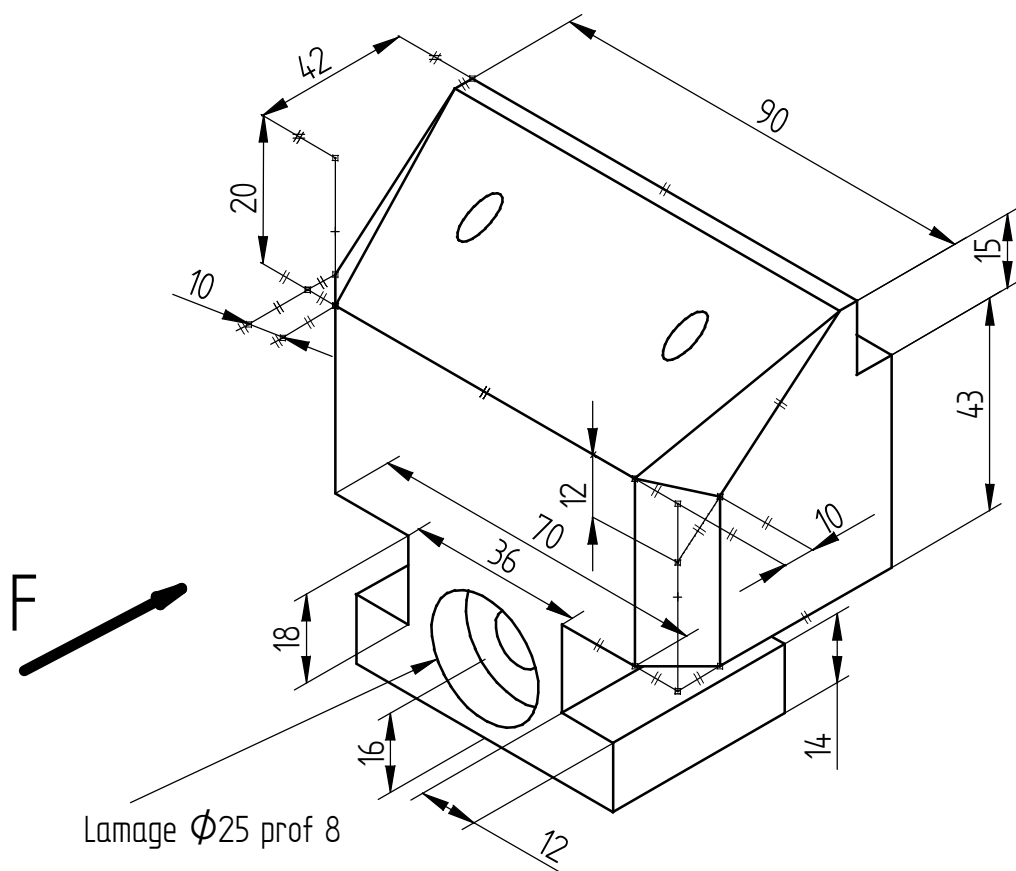
C

D

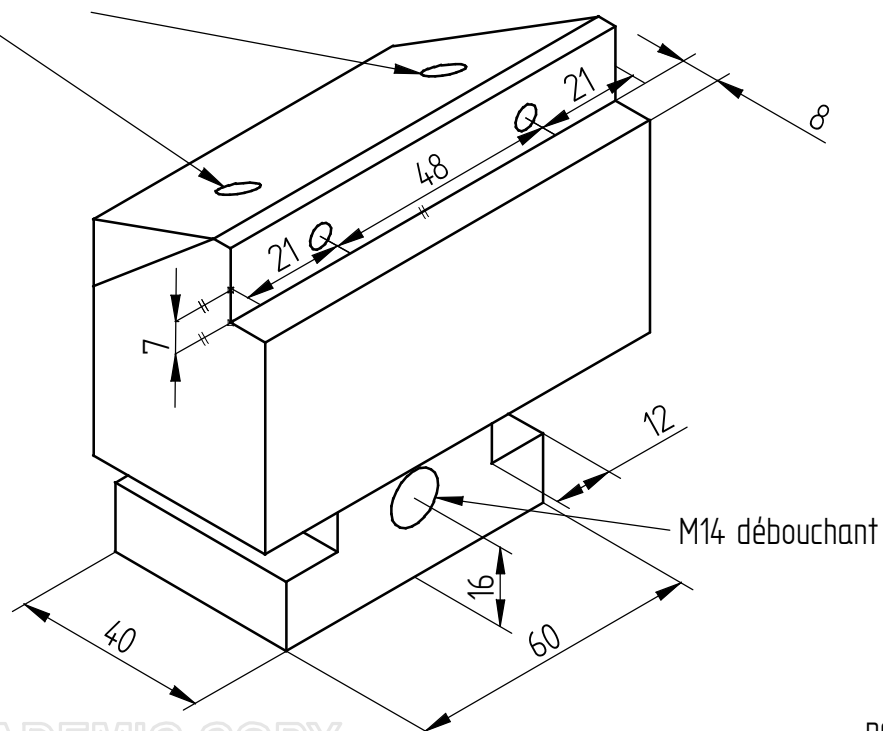
Sur A4 vertical à l'échelle 1 :

n°36

- Vue de face complète suivant F
- Vue de gauche complète en coupe par le plan de symétrie
- Vue de dessus complète



Trous M6 débouchants



A

B

C

D



## Synthèse

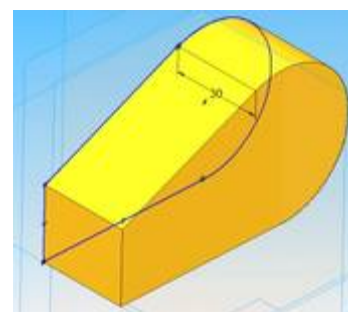
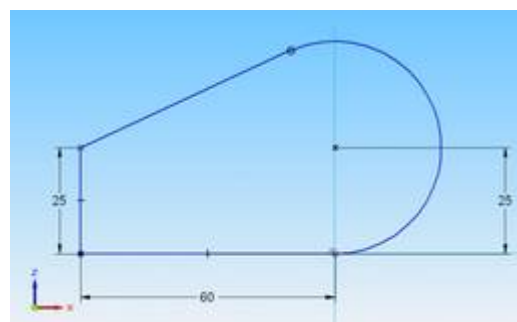
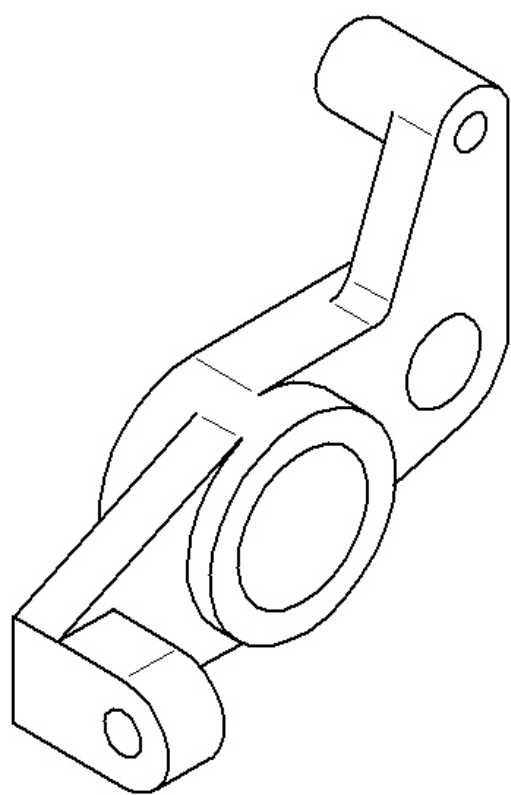
n°38

A partir de la pièce définie ci-dessous, réaliser sur le document réponse

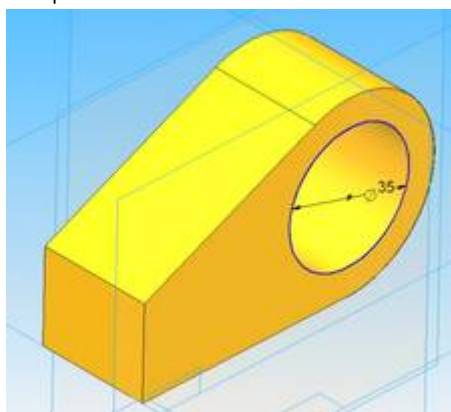
- La vue de face complète suivant F
- La vue de dessus en coupe A-A
- La vue de droite complète

Coter les 2 trous taraudés ainsi que les 2 alésages.

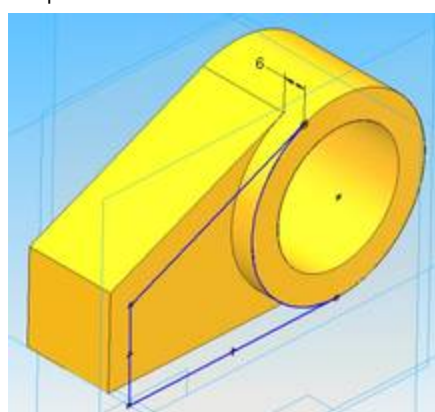
Remarque : ne pas représenter les arêtes tangentes.



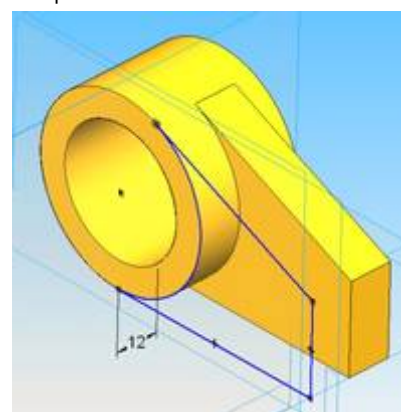
étape 2



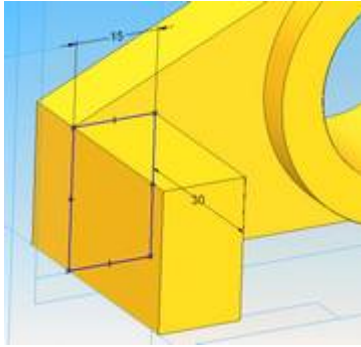
étape 3



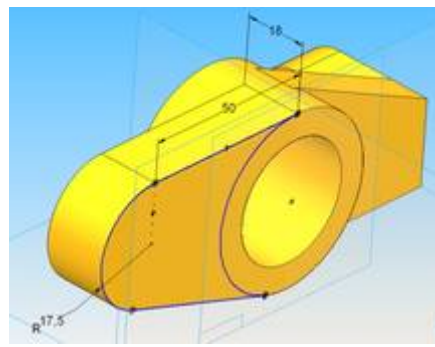
étape 4



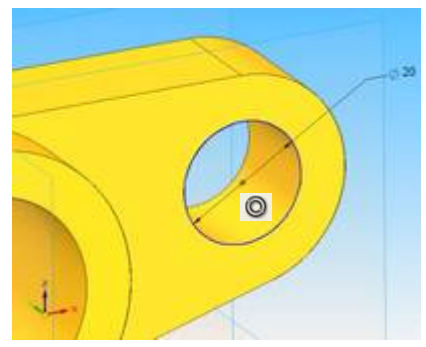
étape 5



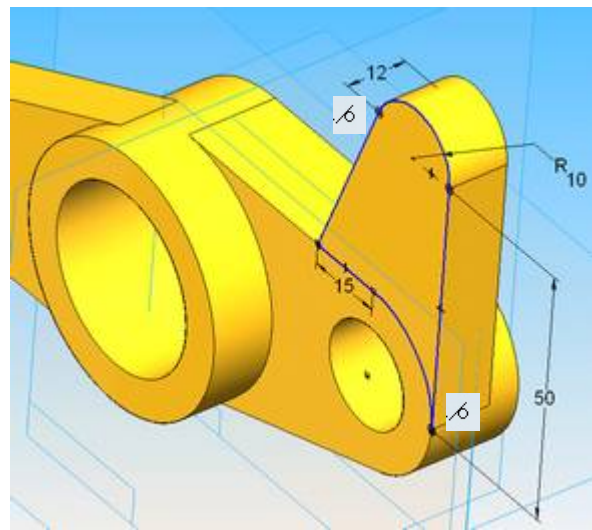
étape 6



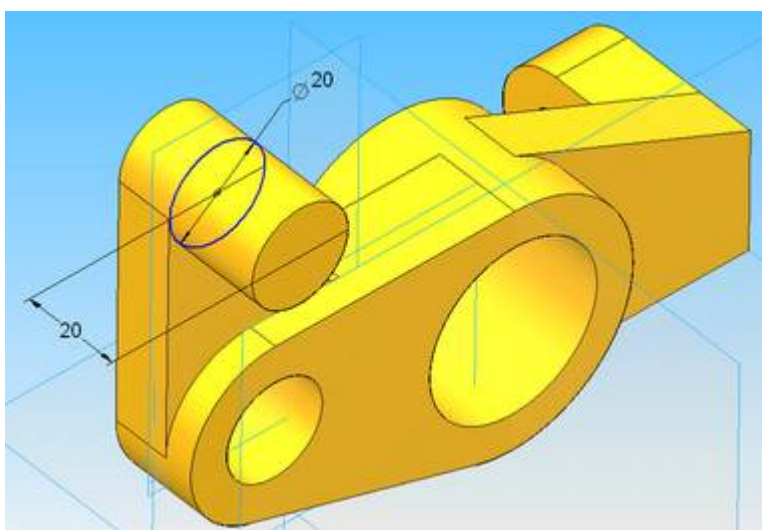
étape 7



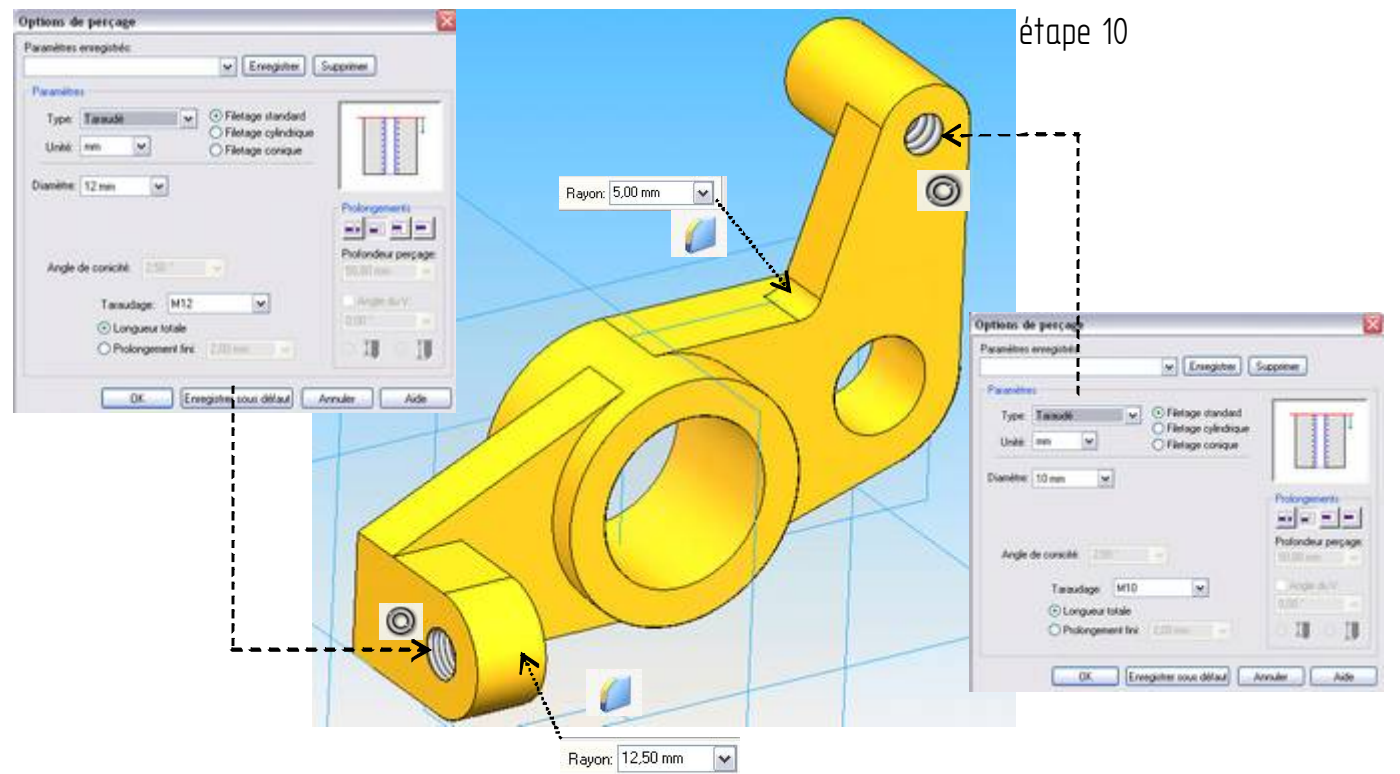
étape 8



étape 9



étape 10



4

3

2

1

D

D

C

C

B

B

A

A

A

A

A-A

4

3

2

1

